

STEM CELL TRAINING

BONE MARROW CONCENTRATE

STEP BY STEP GUIDE

SUPPLIES NEEDED

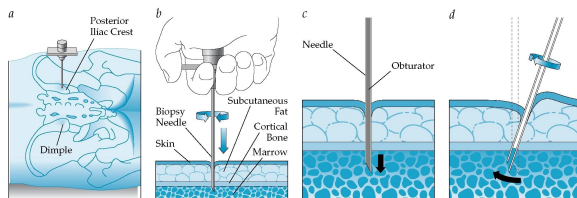
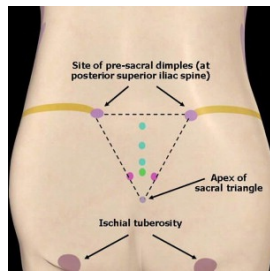
- Bone marrow concentrating kit.
- Heparin 1000 U 35 cc.
- Marcaine 0.25 + Lidocaine 2%.
- 22 gauge spinal needle.
- 11 blade.
- Tapper.



BMA CONCENTRATING KIT

**HEPARINIZE
EVERYTHING !!!!**

**POSTERIOR ILIAC
CREST ANATOMIC
MARKINGS**



PROCEDURE

- Numb skin and subcutaneous tissue.
- Using a spinal needle and peppering technique numb periosteum.
- Make a small incision with 11 blade.
- Gently advance the tip of the trocar onto the periosteum. Tapper may be used.
- Remove obturator and attach a heparinized 20 cc syringe.
- Using back and forth motion obtain 60 cc of marrow.

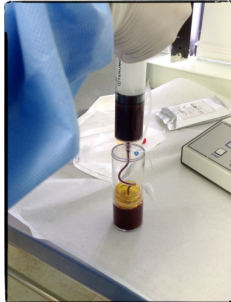


PROCEDURE

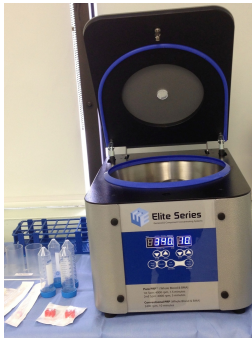
Pass the 60 cc of marrow through the heparinized filter to avoid debris to contaminate the sample.



Place in the Bone
Marrow Aspirate
Concentrating Device



- Centrifuge
3400 RPM X
10 min



- Using the three
locks key discard
serum and obtain
10 cc of bone
marrow.



-
- Place in the Low
Lever Laser Device
for 20 min.

