

Adipose Extraction Overview

These materials are CONFIDENTIAL and PROPRIETARY and for your review only. Although every measure has been taken to establish the accuracy and objectivity of the contents throughout the draft process, this plan is subject to revision as required as new information is obtained. Please respect the sensitive nature of this document by limiting its distribution, protecting the contents and refraining from making additional copies.

Prepare Tumescant Solution

To prepare the tumescant solution for the lipoaspirate pull up 20 cc of Lidocaine (2%) into a 60 cc syringe using a needle

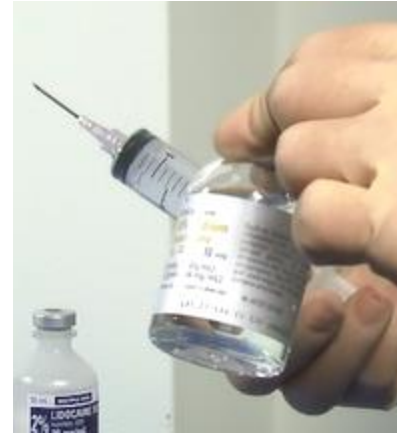


Add the 20 cc of Lidocaine to a bag of 500 cc of saline



Prepare Tumescence Solution

Add 10 cc of sodium bicarbonate into the 500 cc bag of saline



Add 1 cc of epinephrine (1: 1000)



Prepare the Patient

Begin by making a bleb of local anesthetic on both sides of the patient. Prepare the patient by sterilizing the area using iodine and sterile field.



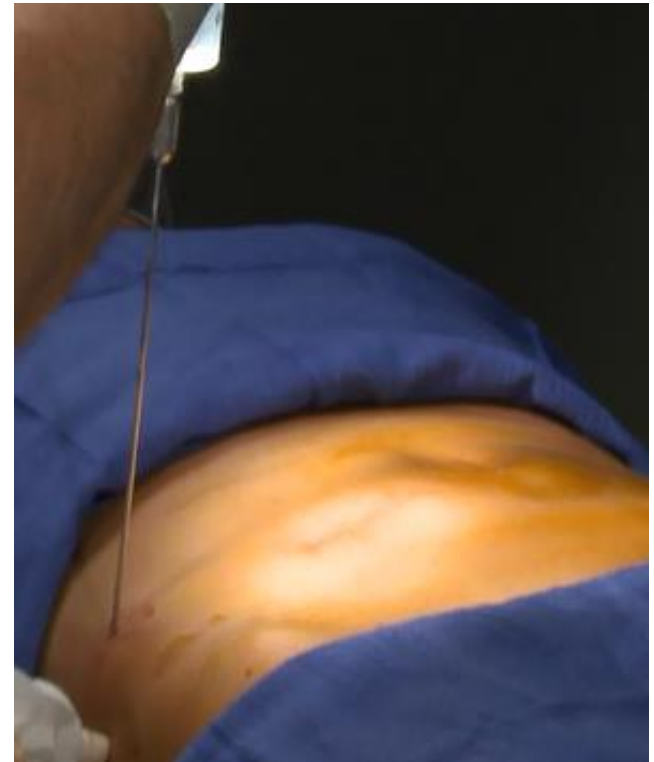
Make Incision

Using an 11 blade make a small incision in the area that was previously anesthetized



Use Infiltration Cannula

Using an infiltration cannula, start infiltrating the tumescent solution into the subcutaneous fat until the tissue has become tumescent. Normally it will take around 250 cc of the solution to obtain 100 cc of adipose tissue.



Use Mercedes Cannula

Using a
3 mm
Mercedes
cannula,
perform the
aspiration of
60 – 100 cc
of fat



Cap Toomey Syringe

Cap toomey snaplok syringe and transfer it into the bench top flow hood to begin the Isolation of Adipose Derived Stem Cells Procedure

